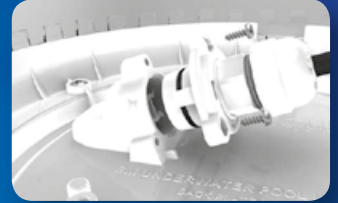


Aqua-Quip's Innovative Pool Solutions

QC LED RETRO-FIT SURFACE MOUNTED

- **Variable Voltage 12v AC ~ 32v AC.**
Use the existing 12v, 24v or 32v transformer.
- **Quick Connect Plug Kit included.**
Simple and quick to install onto any cable.
- **Includes Universal Mounting Bracket.**
Suits all brands of concrete pool lights.



Fit the Quick Connect plug kit to the existing cable, push into rear of light and tighten screws.

Evo2 – LED FLUSH MOUNTED FOR NEW POOLS

- **Suitable for concrete, vinyl, fibreglass pools.**
Simple and quick to install – builder friendly.
- **Evo2 LED lights are ideal for all types of water features, spas, fountains, waterfalls, beach areas, ponds and catch tanks.**
- **Stylish, compact and modern design.**
Recessed light fits flush with pool wall.
- **Detachable cable for easy installation.**
- **Optional stainless steel trim ring provides added elegance.**

JET-VAC AUTOMATIC POOL CLEANER

Now proudly Australian made.

- The huge 115mm throat combined with a large capacity bag allows Jet-Vac to compact up to 3.5 litres of leaves.
- Cleans an average pool in 2 hours
- Automatic reversing mechanism, fewer moving parts
- Works on any pool surface
- Propulsion achieved purely by high pressure water jets
- Requires dedicated plumbing line and is powered by the Aqua-Quip Booster Pump
- Quick and easy to install.

Contact Aqua-Quip for your nearest stockist.

Relax... your pool has never looked more inviting!

JET-VAC
AUTOMATIC POOL CLEANERS



AQUA QUIP

MANUFACTURED BY:
AUTOMATIC POOL CLEANERS (AUSTRALIA) PTY LTD
40 PERCY STREET AUBURN NSW 2144
PH: +61 2 9643 8338 FAX: +61 2 9643 8448

www.aquaquip.com.au

saving up to 80 per cent of all backwash water. Other commendable initiatives include the use of variable speed drive pumps, and heat pumps with solar preheating, and 78,000 litres of rainwater harvesting.



Burleigh Pools

Commercial Pool Award (Outdoor) Joint Winner: Burleigh Pools (Eco Village)

The judges were impressed by the way this Queensland communal pool project maintained existing elements of the

The judges

The judges include respected experts in the fields of water efficiency, swimming pool equipment efficiency, residential design and commercial water treatment.

- Julian Gray, CEO, Smart Approved WaterMark
- David Hallet, General Manager, Archicentre
- Peter Seebacher, Consultant to the Department of Climate Change & Energy Efficiency
- Alan Lewis, Consultant, Aquazure
- Facilitated by Chris Maher, Editor, SPLASH!



Poolside Beaconsfield

property including a Morton Bay Fig, while converting the old milk shed into toilet, change and shower facilities, and using an extended roofline to gather rainwater. Use of cartridge filters, ionisation, ultrasonics and solar heating also boosted its environmental credentials.

Commercial Pool Award (Indoor) Winner: Commercial Aquatics Australia (South Australian Aquatic and Leisure Centre)

This Adelaide project features a sophisticated perlite filtration system which uses dramatically less water than traditional filtration, while energy use is minimised through variable speed pumps. Additionally, the stainless steel construction contains less embedded energy than traditional concrete construction.

Commercial Pool Award (Indoor) Highly Commended: L&V Project Pools (Southern Cross University Pool)

This northern New South Wales university pool has a 76,000 litre rainwater storage tank under the pool concourse which supplies a 34,000 litre backwash supply tank – saving an estimated half million litres of

water per year. The backwash water is then used to irrigate adjacent sports fields. The pool also features UV sanitisation and heating by heat pumps.

Commercial Pool Award (Indoor) Highly Commended: Supreme Heating (Bunbury South West Sports Centre)

This Western Australian project is the first aquatic centre in the southern hemisphere to feature this evacuated tube solar heating system. In fact, the project includes a massive 240 panels – the equivalent of 7200 tubes. These panels are 80 percent more efficient than flat panels and collect solar heat even on overcast days, generating approximately 550kw of energy per day.

Pool Shop Award

The judges wanted to commend the quality of the entries in this category. In previous years they had been critical of the retail sector for not doing enough to encourage and promote environment-friendly products and practices, and even refused to award a winner one year. However this year, two of the entries were so good the judges decided they both deserved to win. Both shops had good product range, educated staff and concerted promotional campaigns.

Pool Shop Award Joint Winner: Poolside Beaconsfield

The judges were impressed by the promotional activity this pool shop undertook, in particular the “green bags” initiatives, specific information nights on environment friendly products and articles written for local newspapers on the subject.

Pool Shop Award Joint Winner: Rainwise

This pool shop also used the media but in a different form – the radio and social media – as well as letter campaigns to both local businesses and consumers explaining rebates and the benefits of environment-friendly products.



Commercial Aquatics Australia

The product awards



Water Saving Award Winner: Poolrite Titan VMF with Diamond Kleen

This product combines two environment friendly products – the Titan VMF filter with improved laterals and high-flow valve for better water flow, and the Diamond Kleen recycled glass filter media which contributes to energy saving through faster backwash times and increased backwash intervals, now verified by independent research.

Water Saving Award Finalist: Waterco MultiCyclone Ultra

The original MultiCyclone won the water saving award in 2010. The new version called MultiCyclone Ultra is a cost-effective incentive to save water by combining two proven water-saving devices — a MultiCyclone pre-filter fitted strategically above a cartridge filter to maximise hydraulic efficiency.

Energy Saving Award Winner: Davey Powermaster Eco

This product also won the major SPLASH! Product Award (see page 38).



Systematic



Sapphire Spas

Energy Saving Award Finalist: Poolrite Gemini Twin Pump

This is an energy-efficient seven-star rated user-friendly two-speed pump with a half-hour rapid clean Boosta mode. It is designed and made in Australia, and is competitively priced to make an environment-friendly alternative readily available to the market.

Mechanical Product Award Winner: Poolrite Systematic

The Symantec is an ingenious water circulating and cleaning system that enables skimming without the need to remove the suction cleaner. It can make energy savings of up to 60 per cent when compared to a traditional suction cleaner. Additionally, it has advanced safety features including a safety vacuum relief valve.

Mechanical Product Award Finalist: Maytronics Liberty

Being cordless (a world first) will encourage consumers to use this energy efficient robotic cleaner, and as it filters at the point of suction, it saves maintenance of the main filter including backwashing. Because it has its own power supply, it doesn't rely on the main pump which means multi-speed pumps can continue to operate at their lower speed.

Sanitisation Award Winner: Placid Pools Ecosplash BioFilter

The forerunner of this technology gained a commendation from the judges in 2010. While this natural system would not be a choice for everyone, the judges believe it should be

encouraged as a potential alternative for the future. While the initial cost of construction would be approximately 30 per cent higher than a traditional pool, energy costs are only half and ongoing maintenance costs are minimal.

Spa Award Winner: Sapphire Spas Powersmart MySpa

This spa has been designed to achieve the lowest daily energy use currently possible. This is managed by a smart spa controller which co-ordinates the variable speed pump, smart filtration system and the integrated heat pump. Additionally, the spa features five levels of insulation.

Product mentions:

There were a number of product entries that didn't win an award but the judges believed were worth mentioning: they are the Elite Poolview pool cover that helps make pool covers more attractive and therefore more appealing to consumers; the Sunbather wireless solar controller that makes solar heating more reliable and therefore more desirable for consumers; the Enviroswim sanitisation product which combines ionisation, oxidation and ultrasonics; and the Chemigem D10 ORP and pH controller that enables dosing a swimming pool within half an hour.

The sponsors



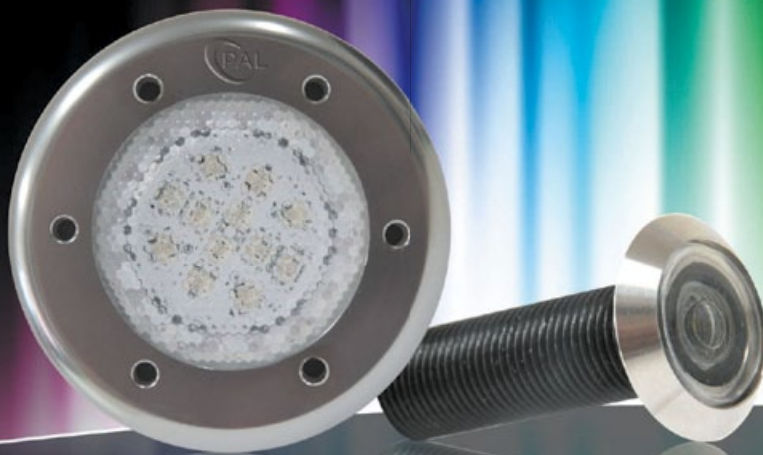
New PAL Pool Lighting Range

Colour your pool with just one touch.

With PAL Colour Touch wireless remote, you can now change the colour mood or brightness of the lighting in your pool with just a TOUCH.

No more flicking On and Off switches to select the colour.

You are now not limited to only 6 or 8 colours you can change to an almost unlimited colour range by just running your finger around the colour wheel.



The all NEW PAL Pool Lighting Range incorporating the innovative PAL Mini Aquatic Light is the first of the PAL Lighting family to incorporate the Unique PAL Colour Touch Technology.

COMPACT ONLY

90mm diameter with a new look flush front

COMPETITIVELY PRICED

Even with all the unique features.

NEW BRIGHTER LED LAMPS THAT CAN BE REPLACED OR UPGRADED

Not like most other LED pool lights when there is a problem the complete light has to be replaced.

THE NEW PAL MINI

Can provide a unique level of lighting on steps, ledges, beach entries, swim outs and water features that only this 16mm diameter light can provide.



BELLSON ELECTRIC PTY LTD

WWW.PALLIGHTING.COM.AU PH. 02 9531 1555



The completed job

Marble makes great grates



This pool in Saronida, 50km south of Athens, originally had a plastic grate



First step, remove the plastic grate



Thoroughly clean the ledge



Start with the corner sections



Place "finger" pieces



Ensure spacers are in place

Overflow grates are made to be practical and strong. But you can add an extra element of class by using marble on the overflow channel.

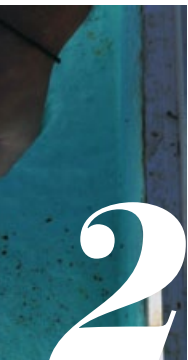
Who better to come up with the method than a Greek company, Sofikitis. After all, the Greeks have been masters of marble since ancient times – with even the Romans doffing their laurels to their superior techniques.

Andreas Sofikitis says if you follow his easy six step plan, you can transform any pool with a wet-edge grate.

- First, email Sofikitis the shape of your pool as an AutoCAD file or PDF; or even a photo and a simple drawing.
- Carefully check the dimensions of the existing plastic grate, including width and thickness; and calculate the measurements of the perimeter of your pool.
- Confirm your order with Poolstones by Sofikitis.
- After you receive the marble drain grate, stop the recirculation of the water, remove the plastic grate, and clean the L-shape ledges on which the plastic grate was placed.
- Place the special anti-vibration adhesive tape along the L-shape ledges.
- Start the replacement of the marble grate from the corners or curved parts of the pool, leaving the rectilinear and easier parts for the end.

The Sofikitis network extends all over Europe, the US and Asia, but there is no partner in Australia or New Zealand as yet. If interested, contact them through the Poolstones or Sofikitis websites.

Contact: www.poolstones.com or <http://sofikitis.gr> ■



Adhere the anti-vibration tape to the ledge



Two men are better than one

GLASS PEARLS

Superior filter media



Manufactured from pure glass, Glass Pearls are a new generation of filter media, capable of providing water of superior clarity.

Its spherical shape results in low coefficient of friction, reducing backwash requirements, saving pool owners both time and water.

- 3 micron filtration
- 20% less backwash water
- High purity
- Safe and smooth
- Time saving
- 0.6mm to 0.8mm in size



WATERCO
water, the liquid of life

www.waterco.com



The lap pool and the *cloud house*

Above: The pool abuts the intriguing cloud extension

Swimming pool weren't common inclusions in Edwardian times. But neither were homes made to look like clouds.

From the street, this Fitzroy North double-fronted home still has the heritage appeal of its century-old frontage. But once inside, a different world

awaits. And from the pool and garden – it is a near-celestial experience.

The idea for this renovation came from the inspired minds of McBride Charles Ryan (MCR) who designed the extension for a young family that had lived in – and been impressed by – an earlier MCR dwelling.

Right: The “red box” kitchen is truly unique





Photos by John Gallings

The house is designed in three parts, allowing for a sequence of distinct and unexpected episodes, with glimpses previewing oncoming spaces and experiences as you move through the home.

The street facade has been left to demonstrate the clients' respect for the evolution of the character of the area and the modest street alteration belies the extent of the comprehensive internal renovation work.

The spaces within the original structure are largely white in colour, united by exotic floral hallway carpet. This journey through the space is followed by encountering a disintegrated red-coloured "box". This is the kitchen, at the heart of the property, which acts as a bridge linking the major spaces.

The cloud-shaped extrusion is the unexpected final space. Following the form of a child-like impression of a cloud it is a playful addition where family and friends can eat and have fun surrounded by the curved form.

The new living addition faces due south while allowing controlled north sun into the living area and providing effective cross ventilation. The form of the "cloud" conforms to setback regulations without appearing obviously determined by them. The extrusion creates a dramatic interior language where walls merge seamlessly with the floor and ceiling.

The craftsmanship is remarkable throughout; it has a sense of care one typically associates with the work of a cooper or wheelwright. While the geometry is playful, the extrusion is essentially a contemporary barrel vault, built from timber-lined, curved corrugated iron.

From inside the cloud, the view is out over the pool and the uncluttered garden.

And when swimming in the pool, the view is of a cloud fallen to earth, and settled upon the streets of inner city Melbourne. ■



Above: Corrugated iron with a light touch

Below: The playful view to the outdoors

Credits

Project team: Rob McBride, Debbie-Lyn Ryan, Marie Chen, Cathryn Panaterra, Ben Inman, Gabriella Muto

Builder: Quinn Constructions

Structural engineer: Hive Engineering





Fun in the *SUN*

Above: Even the most basic slide can add immense fun to a kid's time in the pool. This one is from Aqua Action

Below: The Sub Jumper from Pool Systems for great underwater fun

By Veda Dante

Gone are the days when backyard swimmers had to amuse themselves with noodles all summer or when the only thrill you got at the local swimming pool was jumping off the starting blocks.

Today you will find a new era of interactive aquatic toys and larger-than-life waterparks turning pools into sensory playgrounds with their captivating combination of fun and fitness.

"As far as we are concerned, a great pool toy is one that can get the whole family out of the house and into the pool enclosure," says Kellie Wilson from Pool Toys Australia. "It doesn't have to be unique or expensive, it just has to be fun!"

Lindsay Hartshorne from Lincoln Pool Equipment agrees. "With the variety of toys available nowadays, it is no wonder the pool is 'the' place to be in summer," he says. "I remember when I was a kid, the toy options pretty much consisted of a pool pony and dive sticks. Pool toys have come a long way!"

Hartshorne says ride-on toys remain the perennial favourite for residential pool owners because they accommodate both small and large children.

"Dive toys are really popular as they keep kids happily occupied for hours," he says. "Also, anything with a squirter gun provides endless entertainment, laughter and good old-fashioned, clean wet fun."

If you want your pool toys to last for more than one swimming season, Hartshorne suggests checking the products are certified to Australian Standards.

"Our inflatables are cut out using sophisticated cutting machines to ensure consistent quality throughout our range," he says. "All inflatables are double seam

welded to provide long lasting products. Swimsportz also include wear pads in all high wear areas on the larger items."

For those who like to combine fun and fitness, AquaClimb promises to get the heart racing. Originally designed for commercial swimming pools and used at a variety of locations, such as US lakeside summer camps, the AquaClimb is now also available for residential pools.

This vertical modular system, which is currently being used in roughly 350 North American facilities to increase attendance rates and re-engage patrons, features five climbing panel options that start off at entry level and extend through to a canyon-quality surface.



This inflatable from Pool Systems abides by the rule – whatever else, it must be fun



The Aqua Climb tests energetic and athletic youngsters

Popular among teen and adult demographics, the award-winning system tilts over the water, ensuring swimmers' descent is away from the wall and pool edge.

Douglas Cooke says that while many outdoor climbers prefer to climb on natural rocks and reefs – known in the climbing world as “deep water soloing” – many others have opted for the less risky and more accessible variation of indoor climbing at pools.

Slip sliding away

One of the perennial favourites in waterparks is the water slide. And it's just as much fun when it's in your own backyard.

Aqua Action offers a variety of residential water slides, designed to fit into most spaces, and all slides have a patented built-in water system allowing the rider to experience a waterpark style ride into their own pool.

“Our water slides are designed and manufactured in the USA and are recognised as the safest and best residential pool slides available anywhere in the world today,” says Jeanette Moore.

These include the popular Wild Ride which provides lots of splash excitement in a choice of left or right turn and in a choice of blue, tan, white or grey.

“This slide can accommodate riders up to 113kg which lets the ‘big kids’ join in the fun as well,” says Moore.

Their top of the range is the 360-degree G-Force slide, and it also takes riders up to 113kg. The difference is the high power water sup-



Armed but not dangerous: the UFO from Pool Systems

“Oh No!!” ...
 “Not another
 water test!!”

If you run a Pool Shop you know how it feels. You're flat out trying to sell a customer solar heating, there are five customers waiting at the counter for a water test... and in walks another.

**Would an automatic
 accurate water test
 in just 60 seconds save
 the day?**

In my dreams you say!

- 1 Fill a disc with water
- 2 Load the disk
- 3 Click “Run Test”

D4 Data have released an upgrade kit for their Aqua Data software that has been an industry standard for many years.

The kit includes a Spin Photometer, the required software upgrade and an initial stock of discs.



(03) 9550 1868
 mail@d4data.com.au



REVOLUTIONIZING THE SOLAR POOL HEATING INDUSTRY



The **HOTTEST** Solar Pool
Collector Ever Made!

BY

HELIOCOL

**AS PRESENTED
AT SPLASH 2012**



ECO-SPARK®



1300 132 968 | www.Heliocol.com.au



Above: Colour and action attract the kids – just ask Sponge Bob. After much fanfare, the undersea world of Bikini Bottom has arrived at Sea World Resort & Water Park. One of the main attractions is the sophisticated light show. Each evening, a combination of synchronised water jets, music and LED lighting wows the littlies in a colourful theatrical extravaganza. The plumbing and hydraulics for the water features were installed by Hydrocare.

Below: Kids never tire of battling each other – especially if water pistols are involved

ply system delivering a faster ride. It's built for fun and safety with five large fully-moulded slip-resistant steps, child friendly easy-to-grip handrails and high flume sidewalls for added protection.

For the younger backyard adventurer, the Zoomerang water slide is kid-sized, and packed full of fun for riders up to 90kg, with a Zoom Flume water delivery system providing lots of rushing water.

Aqua Action also has the capacity to let you design your own slide, with an extended weight limit of up to 159kg and up to a length of 12 metres.

Moore says plenty of well known personalities have purchased their slides, including rugby league legend Mark Geyer, Australian cricketers Michael Bevan and Shane Warne, and radio host Brendan Jones of WFSM.

Variety is the spice of splashing

In commercial applications, diversity is key according to WhiteWater West's Melissa Kaerne.

"Variety is the best way to grab children's attention and keep them entertained," Kaerne says. "This is accomplished by determining the age ranges of the children who will likely be using the spray elements."

Generally speaking, she says zones within a spray-park are determined based on 0-2 years, 2-5 years, 6-9 years and 10-13 years.

"These age groups learn at different paces, explore differently, utilise their senses differently, and have dif-

fering levels of comprehension," she says. "For younger children, our AquaSpray elements at zero depth or low-to-the-ground attract the most attention; larger elements, such as the Raintree or Power Cannon capture the attention of older children."

When it comes to colour, Kaerne says people opt for bright, vibrant and eye-catching to attract children's imaginations and sense of fun.

"Red is the most popular choice while other effective colours include blues, greens, yellow, orange, magenta and purple. If the facility has an overall theme, we are able to accommodate the colour scheme to ensure a cohesive experience."

While waterpark configurations are as varied as the designer's imagination, most tend to build around a single centrepiece surrounded by secondary elements.

"From there, great consideration is taken to determine the best mix of product for the various age groups, determining the best fit for the amount of space, capacity and budgets requirements," she says.

Zero depth waterparks

While some aquatic parks feature larger-than-life play equipment designed for instant gratification, others provide a clever combination of entertainment and education.

WetSide Water Education Park is a groundbreaking facility on Queensland's Hervey Bay that promotes sustainable water use in a fun and engaging free public space.

Officially opened in December 2009, WetSide is a zero-depth waterpark that features 310 jets, fountains, play equipment, water slides, surfing, music, lights, and a giant water screen. The designers say this creates a safe aquatic environment, reduces insurance costs, and is easier for staff to supervise.

"The project was conceived from a desire to deliver change on Australia's most pressing issue – the delivery of safe, reliable water supplies on the Earth's driest inhabited continent," says Wide Bay Water CEO Tim Waldron. "So what we're doing here is creating infotainment – so that people can learn about sustainable water use while enjoying themselves in a fun environment."

WetSide is supplied almost entirely by recycled rainwater harvested from the local Pialba stormwater network and processed on site as part of the park's educational interactive displays.



Aqua Action Slides Pty. Ltd.

Install an
AQUA ACTION SLIDE
and put more
'FAMILY FUN'
into your swimming
pool design!



For more details
call Jeanette on
Freecall: **1800 SLIDES** or
Email: sales@slides.net.au | www.slides.net.au

feature



This inflatable volley ball net from Lincoln is convenient as well as fun. When you've finished your game, you simply remove it from the pool

"The facility showcases more than \$10 million worth of filtration and sterilisation systems," said Group Managing Director of Argo Will Marcus, the project's principal architect.

"There isn't a cleaner waterpark water in the world, and that's no idle boast. We can also claim to have the only waterpark that we know of in the world that generates water instead of using it. As waterparks are typically incredible water consumers – not great when we are all trying to conserve this precious resource – having a facility that creates a surplus of clean water is a real breakthrough in waterpark design."

Marcus says his team worked with a number of kinetic design principals "to steal people's attention."

"The water play area uses more than 2000 water jets, and a sixth of them are computer controlled interactive jets designed to attract attention day and night," he says.

hidroplay Hidroplay Playscapes

EXCITING PLAYSCAPES
MADE FOR KIDS!

AUSTRALIAN
MADE

www.hidroplay.com.au
Phone 1300 796 759
Email info@hidroplay.com.au

**SWIMPLEX
AQUATICS**



A residential version of the AquaClimb



The Aqua Blaster shoots a stream of water up to 10 metres. From Pool Systems

“Combined with music, computer controlled jets dance to popular and classical music, creating a mesmerising physical attraction.”

Marcus says the colours are also selected to blend in seamlessly with the seaside location.

“We used blues of all hues, purples, greens and white as our colour palette,” he says. “We even managed to get the US supplier of the main tipping bucket water feature to match their equipment with our special colour scheme instead of the usual primary colour schemes.”

Bringing people together

Next in development is an Argo upgrade of Gladstone’s aquatic centre.

The \$2 million project, which includes a splash park for children up to the age of 12, is designed to refocus the city’s already well-used aquatic centre into a meeting point for families to enjoy their recreational time.

The splash park, designed by Argo Architects in conjunction with Techno Water Designs, Des Newport Consulting Engineers and Wilson Landscape Architects, will feature more than 50 interactive water play items.

Skating in the water with Pool Systems Swivel Boards



Pool Builders

Looking for a way to differentiate your business & gain a competitive advantage?

Stop spending your energy converting a customer from what they really want to a standard mass-produced off-the-shelf pool. **Break free of the mould and consider a pre-engineered stainless steel Albatross pool today!**

An Albatross pool provides you with the flexibility to cater for any client!



For well over 40 years Albatross Pools have been producing award winning swimming pools, which can be built to almost **any shape, size and depth.**

The new innovative heavy-gauge stainless steel construction is a completely self supporting structure making an Albatross pool ideal for difficult and sloping sites - all backed with **an extensive 20 year warranty!**

From lap pools to unique freeform shapes, an Albatross pool is easy to build, has extremely low transport costs and comes with a guaranteed order turnaround time of 7 days.

For further details on how Albatross Pools can help you differentiate your business and gain a competitive advantage with a pre-engineered stainless steel pool, contact Head Office on **(03) 9870 3011**, email **pools@albatrosspools.com.au** or visit **www.pools.com.au**.



ALBATROSS POOLS

Family Pool Builders Since 1969

www.pools.com.au

21 Summer Lane
Ringwood, VIC 3134
T. (03) 9870 3011

“The water play equipment and layout has been designed to stimulate creative play and social interaction for children,” says Marcus. “The exploration of the labyrinthine spaces and variety of water effects are key design ideas to hold the children’s attention and delight the parents.”

Despite the facility’s apparent visual complexity, the whole layout is management friendly with durable, hard wearing and child-safe finishes; a very high level of visibility from a single point of view, and specifically designed lifeguard routes around the area to minimise staffing costs.

“The revolutionary design, incorporates the qualities of an Ancient Greek agora or ‘meeting place’ with a modern zero depth water play zone,” says Marcus.

Below: Compact waterslides are becoming very popular, especially in holiday parks where space is at a premium. This Swimplex slide at the Gold Coast Holiday Park uses RTM (resin transfer moulding) technology, enabling two shiny surfaces on the slide compared to one rough surface using conventional FRP technology



“The architect’s intention was to create quality places for family and community interaction; places that are safe, beautiful, functional, and that serve a real purpose.”

Gladstone Regional Council is advertising expressions of interest for suitable contractors vying to be shortlisted for the construction tender. Building is anticipated to occur in 2013 for completion in time for the start of the swimming season the following October.

Inflatable materials

When it comes to purchasing pool toys and aquatic playground equipment, specialists recommend hard-wearing, non-corrosive materials that prevent mould and mildew, says Ian Radcliffe of Aflex Technology.

“Our products use 690gsm PVC substrate, using a Ripstop polyester weave fabric base cloth with a superior flexible coating on both sides. This includes a protective finish on the coating, making it extremely durable and hard wearing,” he says.

Given the introduction of Australian standards regarding waterborne inflatables, Aflex is about to launch a new concept in airflow innovation designed especially for facilities with shallower pools.

“This new, 600 series will help facilities make the right decisions when choosing their new inflatables, instead of them commissioning off the shelf products that potentially could not be compliant,” he says. ■

IQ. THE ROBOTIC REVOLUTION.

THE TRUSTED SUPPLIER OF MAYTRONICS RESIDENTIAL AND COMMERCIAL ROBOTIC CLEANERS.



RESIDENTIAL Swash CL

- Reliable cleaner leaving the family pool sparkling clean
- Cleans and scrubs, including a waterline scrubbing feature
- Floor and Cove areas cleaned
- Stematic, intelligent scanning for optimum coverage
- Suits pools up to 12 m
- 2 Years warranty

Contact us now and ask for your free demonstration of a cleaner!

COMMERCIAL Dolphin Wave

- Thorough, reliable pool cleaning for olympic-sized and public pools
- Cleans and Scrubs floor, slopes, edges and corners
- Gyro scanning - the ultimate for commercial pool coverage
- Drive in, drive out for easier manual handling
- Remote control to give you extra control
- Suits pools up to 60 m



thesmartchoice

www.interquad.com.au

NSW - Head Office

International Quadratics Pty Ltd, 12 Gatwood Close, Padstow, NSW 2211

t 02 9774 5550 f 02 9774 5552 e sales@interquad.com.au



Footy in the pool, anyone? It's a great way to bring the fun of winter sport into the summer environment. From Pool Systems



A penguin ride for younger kids from Lincoln



Practice water polo skills and have even more fun in the pool with the Wibit inflatable pool goal from Hydrocare



The Wild Ride slide from Aqua Action



Argo's water friendly WetSide waterpark in Hervey Bay



Even small resorts can benefit from a water slide, this one is from Swimplex

Perfect pool & spa temperature just got a lot smarter

Put your trust with one of the world's leading manufacturers and design specialists.

Accent heat pumps

Now with exclusive in-built tariff optimising intelligent controller to substantially reduce your heating cost.



NEW
"Tariff Optimising"
Intelligent
Controller

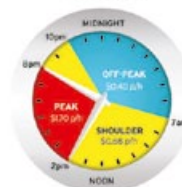
RHEEM POOL HEATING

HEAT PUMP POOL HEATING COSTS BY HOUR*

Weekends & Public Holidays



Weekdays



Best time to save
Moderate savings
Peak price

* Costs shown are indicative only. Electricity pricing varies by State and Region and contact with local retailers should be made to validate rates applicable in any particular case.

INSTALL A



Call us today for technical sales advice and the location of your nearest distributor, or visit www.rheempoolheating.com.au



Rheem Pool Heating Advisory 1300 132 950
email: info@rheempoolheating.com.au

SPASA QUEENSLAND

EXTENDS A BIG

THANK YOU

TO OUR

MAJOR SPONSOR



AND ALL OUR OTHER SPONSORS



WE APPRECIATE YOUR SUPPORT DURING 2012

AND ASK THE POOL INDUSTRY TO SUPPORT THOSE THAT SUPPORT YOUR ASSOCIATION



SPASA Queensland's awards were held in July at the Sofitel Brisbane.

The winners were:

Pool Builder of the Year: Environ Pools

President's Award: Placid Pools

Freeform under \$50,000: Majestic Pools

Freeform \$50,000 to \$100,000: Majestic Pools

Freeform over \$100,000: Placid Pools

Traditional under \$50,000: L&V Project Pools

Traditional \$50,000 to \$100,000: Majestic Pools

Traditional over \$100,000: Majestic Pools

Composite Fibreglass under \$40,000: Freedom Pools

Composite Fibreglass over \$40,000:

Compass Pool Centre

Enclosed Pool: Cascade Pools

Lap Pool: Majestic Pools

Courtyard Plunge Pool: Majestic Pools

Aboveground Modular Pool: Classic Pools

Spa Pool: Compass Pool Centre

Water Feature: Placid Pools

Lighting Feature: Majestic Pools

Pool Renovation under \$25,000: Mad Pool Interiors

Pool Renovation over \$25,000: Norfolk Pools

Commercial Concrete Swimming Pool under \$250,000:

Surfside Pools

Commercial Concrete Swimming Pool over \$250,000:

Surfside Pools

Commercial Lap Pool: Boutique Pools

Commercial Renovation under \$250,000:

L&V Project Pools

Commercial Renovation over \$250,000:

L&V Project Pools

Commercial Lighting Feature: Surfside Pools

Commercial Pool Water Feature under \$250,000:

L & V Project Pools

Commercial Pool Water Feature over \$250,000:

L & V Project Pools

Domestic Classic Pool: Majestic Pools

Spa/Sauna/Hot Tub: Majestic Pools

Display Pools: Classic Pools

Creative: Majestic Pools

Domestic Technical/Engineering: Majestic Pools

Commercial Technical/Engineering: L & V Project Pools

Concrete Sustainable Swimming Pool: Noble Pools

Pool Shop: Classic Pools

Salesperson of the Year:

Les Robinson – Compass Pool Centre

Construction Supervisor

of the Year: Murray Willman – Norfolk Pools

Pool Technician of the

Year: Jamie Holmes –

JC Pool Services

Industry Trade Repre-

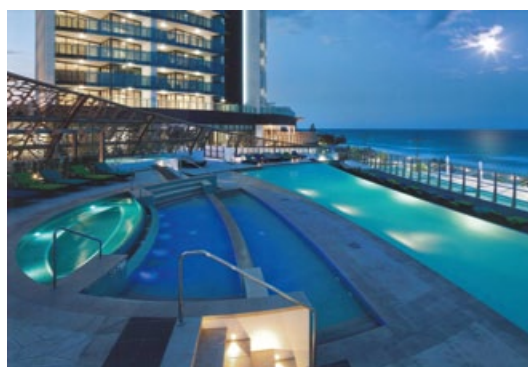
sentative: Anthony Lestani

– Sunbather

Above: *President's Award*,
Placid Pools

Below left: *Lap Pool*,
Majestic Pools

Below right: *Commercial*
over \$250,000, Surfside
Pools



I need to find a pool product in a hurry! Where do I look? **The Online Blue Pages.**



The **Online SPLASH! Blue Pages Directory** allows you access to all the latest products and services in the pool, spa and aquatics industries. With nearly 500 supplier listings, plus thousands of products and brands.

Go online now and check it out.

Click on the **Blue Pages Trade Directory**, www.splashmagazine.com.au

A screenshot of the SPLASH! website homepage. The header features the SPLASH! logo, a navigation menu with links like HOME, RESIDENTIAL, COMMERCIAL AND AQUATICS, HOT PRODUCTS, EXPOS, INDUSTRY NEWS, and ARCHIVED MAGAZINES, and a Pentair Water logo. The main content area includes a large image of a swimming pool with the headline "Swimming with heavenly grace -", a "HOT PRODUCTS" section with articles like "Attention pool builders - COLTE swimming" and "Sales position with Enviroswim -", and a "TRADE DIRECTORY Blue Pages" sidebar. The footer contains "INDUSTRY NEWS" with a headline "SPASA Queensland report urges shift to an open and inclusive culture -" and a "LANDSCAPE AUSTRALIA EXPO" advertisement.

For advertising enquiries contact Karen Jaques
02 8586 6135 or kjaques@intermedia.com.au

SPLASH!



The Victorian Awards were held this year at the National Gallery of Victoria.

The award winners were:

Pool of the Year: Aquarius Swimming Pools

Product Innovation Award: Remco for SwimJet

Sustainability Award: Waterco for MultiCyclone Ultra

Water Neutral Pool Program Award: Rainwise Coburg

Best Residential Concrete Pool over \$100,000: Baden Pools

Best Residential Concrete Pool under \$100,000:

Good Soil and Water

Best Residential Concrete Pool under \$50,000:

Goldfish Pools & Landscapes

Best Residential Fibreglass Pool over \$35,000:

Compass Pools Victoria

Best Residential Fibreglass Pool Under \$35,000:

Gordon Avenue Pools & Spas

Best Traditional Styled Pool: Aloha Pools and Elite Pools

Best Natural Pool: PJ Pools & Spas

Best Residential Courtyard Pool: Baden Pools

Best Commercial Pool: Aquarius Swimming Pools

Best Residential Spa: Aloha Pools

Best In-Situ Portable Spa: Endless Spas

Best Residential, Pre-engineered, Vinyl-Lined, In-

Ground Pool: Albatross Swimming Pools

Best Residential Lap Pool: Aloha Pools

Best Residential Pool & Spa Combination: McNamara

Pools, Courts & Landscapes

Best Pool and/or Spa & Landscape Combination:

Aquarius Pools

Best Renovation: Aloha Pools

Best Innovative Pool or Spa: Out from the Blue

Best Fibreglass, Acrylic or Vinyl-lined Pool by a Coun-

try Member: Gordon Avenue Pools & Spas

Best Concrete Pool by a Country Member: Naughtons

Pools & Spas

Best Residential Indoor Pool: Aloha Pools

Best Water Feature: Aloha Pools

Best Control, Water Quality or Convenience Product:

Remco Australia for

SwimJet

Best Safety Barrier:

Frameless Impressions

Sales Person of the Year

(Retail): Nicole Roncari

from PJ Pools & Spas

Sales Person of the Year

(Wholesale): Paul Jacobson

from BioLab Australia

Best Spa Retailer:

Endless Spas

Best Pool Shop:

Naughtons Pools & Spas

Above: *Pool of the Year*,
Aquarius Swimming Pools

Below left: *Best Residential*
Spa, Aloha Pools

Below right: *Best*
Traditional Styled Pool,
Elite Pools

