

The C2K centre was built in 2004 and the club funded the entire project without government assistance. The club already owned the land, and paid more than \$17m for the construction of the fitness centre and pools. The centre management is now sub-leased to Coulter Swim School, a long-term contractor for the club from the time when the old pool was inside the main building.

The club identified the need to improve the energy efficiency of the aquatic centre to reduce current and projected energy costs and reduce their carbon footprint.

Simons Green Energy was engaged to design an efficient, low running cost and low maintenance cost, grid-parallel cogeneration system that would provide the C2K aquatic centre with enough power to cover base load electricity demands while utilising waste heat to provide hot water for all of the centre's swimming pools and domestic hot water storage tanks.

The centre features four indoor pools including a 25 metre pool, an aquarobics pool, a program pool and spa pool. All of these pools were previously heated by costly electric heat pumps, while domestic hot water was supplied by gas-fired hot water units.

The engineering team from Simons Green Energy worked closely with the

club's staff to ensure a smooth installation without interruption to the operation of centre. The team also worked closely with Endeavour Energy to satisfy their strict design and installation regulations for connecting on-site power generation to the main power grid.

Castle Hill RSL facility manager Alan Depaoli says that after several months of reliable and low cost operation, he is convinced that this has been an outstanding investment for the club.

"I started this process more than five years ago," says Depaoli. "When we did the renovation we couldn't get power in to the site – we had all sorts of problems with the power provider – they actually wanted something like \$1.5m to get power out to us. So one option was cogeneration and we investigated that, but in the end the power provider did a backflip and put some of the infrastructure through."

While investigating the possibilities, they applied for grant through The Community Energy Efficiency Program (CEEP) and were offered \$300,000 for a project that would cost \$4.5m at the time to install cogeneration in the C2K aquatic and fitness centre, and trigeneration at the club building.

"I wanted to do the cogen first," he says. "But they wanted me to do the



C2K aquatic centre

Site owner: Castle Hill RSL Club

Commissioning date: September 2011

Systems details:

- SEVA 142 kilowatt (kWe) gas engine cogeneration unit
- Titanium heat exchangers
- 3,500L domestic hot water storage tank

Cogeneration size:

- 142kWe (electrical), 2130 kWh generated per day
- 207kWt (thermal), 3105 kWh generated per day

Fuel source: natural gas

Building type: aquatic centre with four indoor pools, fitness centre and gymnasium.

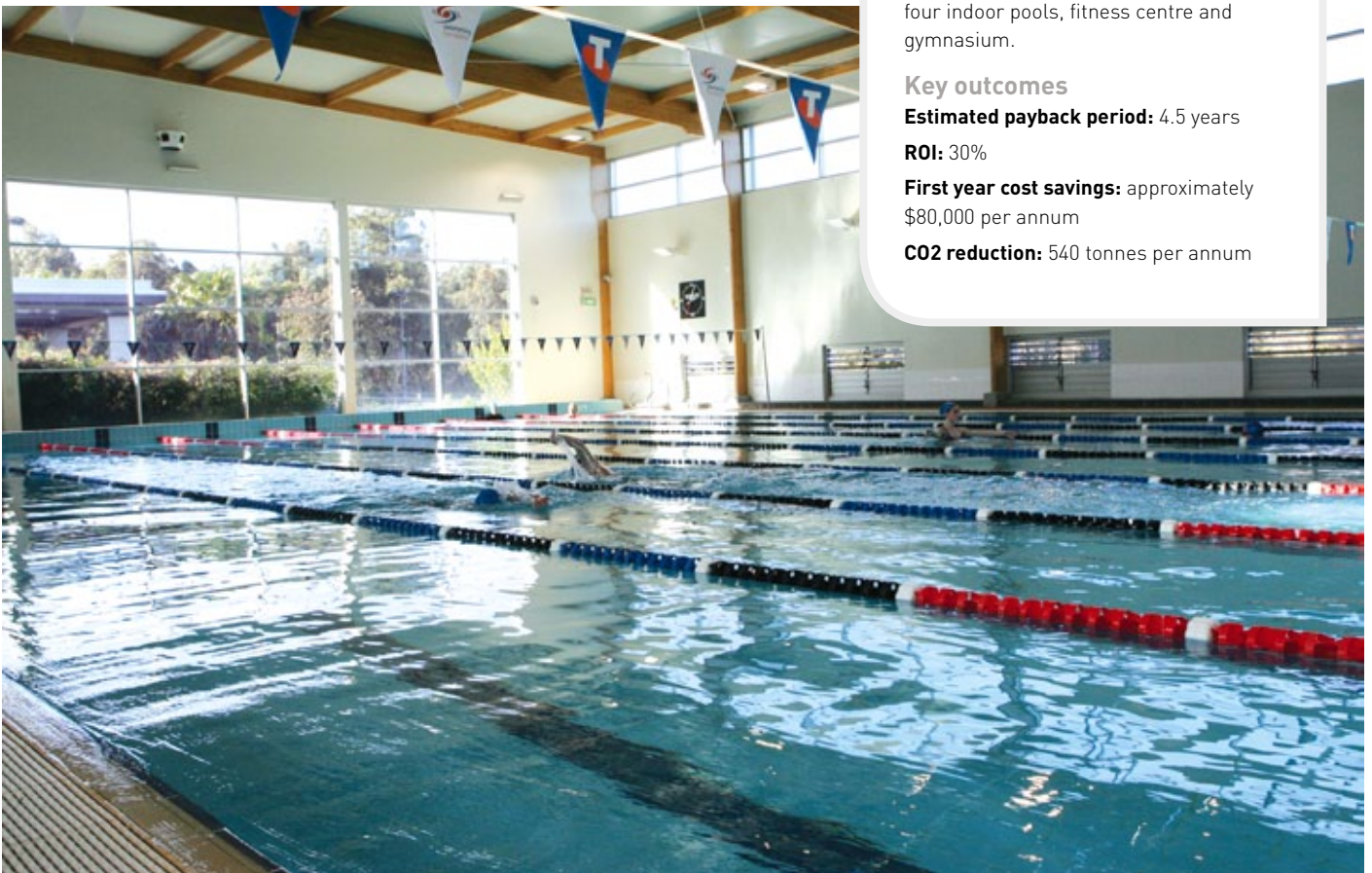
Key outcomes

Estimated payback period: 4.5 years

ROI: 30%

First year cost savings: approximately \$80,000 per annum

CO2 reduction: 540 tonnes per annum



whole lot. But having to pay \$4.5m and only getting \$300,000 back didn't make sense, so we put it off."

By the time they investigated the possibilities again, the costs for setting up a cogeneration plant had plummeted. It would cost them only \$500,000 to set up the cogeneration for the aquatic centre and they could fund all of that themselves.

They then applied for a CEEP grant for trigeneration at the club building. That cost was now only one million dollars and the grant would cover \$450,000 of it.

"The prices had come down a long way," he says. "By this time there was more competition. And even though this technology's been around for a long time overseas, it's fairly new over here. The equipment's made overseas – Germany in particular, but even so it's affordable now."

Depaoli says it's important that you size the equipment correctly for job at hand.

"Some people think they'll use it as a backup generator as well," he says. "But that means you have to run this huge unit in case you ever lose power. You're better off buying a separate backup generator in that case."

"Simons Green Energy sized the unit to maximise all of our waste heat and cover the base load," he says.

"Now, I'm saving about \$9000 per month on power. Previously it cost us between \$25,000 and \$29,000. Now it's down to between \$15,000 and \$16,000."

"The costs vary from winter to summer. In summer it's higher, but across the board we're getting more than a 30 per cent saving."

Depaoli says the savings add up to more than \$100,000 per year, meaning he'll get payback within five years. The units are expected to last for 20 years, meaning there should be more than 15 years of free savings. And as power prices are expected to keep increasing, that means the savings could be even more beneficial in future.

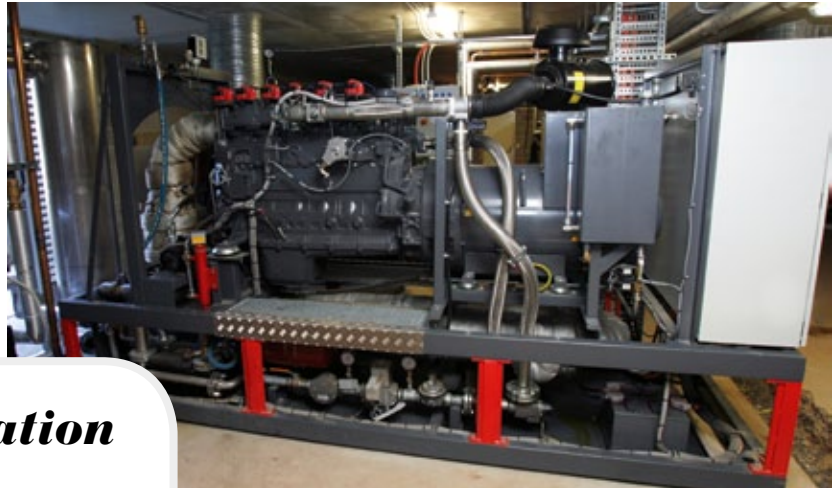
"We only run the system from seven to eleven, on peak load times. When you go to off-peak the savings are more marginal. But if the rates go up we can run it longer."

When asked if he'd recommend cogeneration to managers in a similar situation to himself he is emphatic.

"Oh God yeah, I'd recommend people look into it," he says.

"But there's a lot of variables you need to make the unit work properly. For example, the reason I didn't go for trigen for the fitness centre is because the club uses cold water for aircon but the fitness centre doesn't."

"If you've got nowhere to use your waste heat it's not



The six-cylinder MAN engine produces 775,320kW of electricity per year which has reduced energy costs dramatically

Cogeneration benefits

- Reduced primary energy use
- Reduction of CO2 emissions by 50 per cent
- Possibility of coupling with absorption chiller for cooling (trigeneration)
- Reliable supply security – in case of power outages from the grid
- Reduced primary energy costs
- Stabilised electricity costs over a fixed period.
- Reduced investment in surrounding plant such as boilers.
- Flexible procurement options



Here comes the powerhouse

worth putting in. But I can use all of the waste heat in the three pools and a spa – which is heated to about 38 degrees – so it works well for us."

He says the pools take the priority of the heat. It goes through all the heat exchangers to all the pools, then goes via a heat exchanger to heat the water for the hot water system. By the time the water gets upstairs for the hot water system, it's already preheated to 40 degrees.

It also heats the air in the pool centres – which is important to prevent condensation.

"The air temperature has to be one degree above the pool temperature to avoid condensation," he says. "And our LTS pool runs at 31 degrees, so the air has to be at least 32 degrees. That was actually beyond the specs of our air con units when the centre was finished in 2004. So the cogeneration adds to that and really helps."

Designed and installed by Simons Green Energy, the cogeneration plant is made up of a SEVA 142 kilowatt (kWe) reciprocating gas engine, a series of heat exchangers and a 3500 litre domestic hot water storage tank. The six cylinder MAN engine produces 775,320kW of electricity per year which has reduced energy costs dramatically.

Derek Simons, CEO of Simons Green Energy says that together, Simons Green Energy and Castle Hill RSL have successfully implemented a sustainable and cost-efficient energy system.

"It's setting a benchmark for the club industry and demonstrating its application for other similar sites throughout NSW and Australia," he says.

The cogeneration system will reduce the centre's CO2 emissions by approximately 540 tonnes per annum. This equals the environmental benefit of planting 5400 trees (left to grow for 20 years) or removing 120 cars per year off the road.

"In addition, it is cost-effective and with escalating electricity prices and the introduction of a carbon price, the future savings for the club will be substantial," says Simons.

Contact

Simons Green: www.simonsgreenenergy.com.au

SCE Energy: www.sce-energy.com.au ■

IQ.

The Robotic Revolution

THE TRUSTED SUPPLIER OF MAYTRONICS RESIDENTIAL AND COMMERCIAL ROBOTIC CLEANERS.



RESIDENTIAL

Hybrid

- Electrically self powered system - Uses water flow to generate electricity for the cleaner driving & scanning system
- Managed by "Robotic Cleaner" scanning algorithm, achieves excellent & efficient pool coverage.
- The only suction cleaner that offers active brushing system
- Electrical LED, signals normal operation and provides indications on flow rates
- IQ extended warranty (2 years)



RESIDENTIAL

Swash CL

- Reliable cleaner leaving the family pool sparkling clean
- Cleans and scrubs, including a waterline scrubbing feature
- Floor and Cove areas cleaned
- Stematic, intelligent scanning for optimum coverage
- Suits pools up to 12 m
- 2 Years warranty



COMMERCIAL

Dolphin Wave

- Thorough, reliable pool cleaning for olympic-sized and public pools
- Cleans and scrubs floor, slopes, edges and corners
- Gyro scanning - the ultimate for commercial pool coverage
- Drive in, drive out for easier manual handling
- Remote control to give you extra control
- Suits pools up to 60 m



Contact your local IQ distributor NOW and place your order.

NSW - Head Office

International Quadratics Pty Ltd
T: (02) 9774 5550 F: (02) 9774 5552
E: sales@interquad.com.au

QLD

Aquatic Elements Pty Ltd
T: (07) 5534 3136 F: (07) 3259 8519
E: sales@aquaticelements.com.au

VIC

Aquachem Pty Ltd
T: (03) 9792 0088 F: (03) 9792 9442
E: admin@aquachem.com.au

WA

Austral Pool Solutions Pty Ltd
T: (08) 9240 5600 F: (08) 9240 4333
E: sales@australpool.com.au

SA

Aquatune
T: (08) 8224 0344 F: (08) 6234 5508
E: aquatune@ace.net.au

thesmartchoice

www.interquad.com.au

International Quadratics, 12 Gatwood Close Padstow, NSW 2211

The curved roof of the South West Sports Centre is an impressive sight adorned with 240 solar panels



By Kim Ball

Photography by Ross Wallace Photography

Capturing the western sun

Using the sun's free energy is the way of the future according to Supreme Heating WA agent Craig Doncon.

His message seems to be getting through with Supreme Heating in WA recently completing its biggest contract, after it successfully tendered to install its evacuated tubing solar system at the Bunbury South West Sports Centre.

The size of the project is impressive with the panels taking up almost 1000 square metres of the centre's roof space. Not only is it the first project of its size in Australia, it is also the biggest in the Southern Hemisphere with a total of 240 panels or 7200 tubes.

The Bunbury centre is two-hours from Perth and features a championship 10-lane indoor pool, a four-lane 25-metre indoor pool, a freeform leisure pool with a waterslide attached, as well as a 16,500-litre spa, a sauna and a steam room. This all equates to 2.9 million litres of water that requires heating.

The centre caters for the greater Bunbury region: a population of approximately 67,000 people in the City of Bunbury and the shires of Capel, Dardanup and Harvey.

As the only indoor pool of its size in the region, the centre is an attractive venue for schools to utilise for swimming lessons and carnivals as well as for other learn-to-swim programs and clubs. Then there are the 3500 members: 68 per cent of whom have full membership which includes pool usage.

South West Sports Centre aquatics operations manager Richard Duke says the aquatic facilities are popular with patrons.

"The aquatic areas are a major draw card for attracting people to the centre," says Duke. "Aquatic attendances form more than two thirds of the numbers of people through our doors.

"Patrons haven't noticed the difference in water temperature since the evacuated tubing system was installed, which is a positive thing. However, from the centre's perspective, the system has supplemented or replaced the gas-powered boiler to heat the swimming pools," he says.

"This means that on a sunny day the pools are heated for 12 hours by the sun. If there is enough heat in the pool overnight when we put the blankets on, the boiler may only fire up once through the night to simply top the temperature back up, which for the 50 metre pool is 26.7 degrees and for the leisure pool is 32.1 degrees."

When Duke started with the centre in 2008, his role was to identify areas to reduce costs including using pool blankets and reducing water and gas usage. Following two energy audits and an asset maintenance report, the recommendation was to switch to another viable heat source.

"We considered different options like geo-thermal heating. More research confirmed the most viable option for the centre, and the expected payback or savings we could expect from making the changes," says Duke.

"There were a number of factors taken into consideration before identifying that the evacuated tubing solar system would be the best for the site. Factors included the building layout. It runs from east to west, which means the roof area for the panels faces due north. Combined with the curve of the roof, this means the panels capture the sun's rays at the perfect angle without too much change to the framework.

"Another advantage was the system suited the windy environment here in Bunbury. The small gap between the evacuated tubing allows the wind to pass around it thus avoiding any lift. For us that was a big consideration as well as the system's impressive results for effectiveness and efficiency.

"A further factor was that being located within 1.5km from the ocean, the centre experiences salt spray. The tubes are easy to look after and don't collect debris or salt that might affect operation."

Doubling the benefit of the sun

The centre has two separate evacuated tubing solar heating systems installed. A system for the lap pool (150 panels) and a second system for heating the leisure pool (90 panels).

"This system picks up infrared light as well as UV and direct solar, so that even when it is raining the system will still work, making it an unlimited energy source."

The system involves two discrete bodies of water: the pool water and the non-potable water that is part of the system on the roof; and a heat exchanger that enables the exchange of heat between the two bodies of water.

The solar roof circuit pumps non-potable water through a closed loop system. The heat from the roof is absorbed into the non-potable water and transferred to the pool water via the heat exchanger. The two bodies of water never touch; rather the energy is transferred through plates in the exchanger.

The non-potable water heat is dependent on the heat of the sun and the panels on the roof are designed to stagnate or disperse heat above 230 degrees. When the pool reaches its heating limit, the safety system releases excess heat as steam via multiple valves on the roof.

"This system picks up infrared light as well as UV and direct solar, so that even when it is raining the system will still work, making it an unlimited energy source," says Doncon.

"The entire system has been hydraulically balanced and maintenance is minimal. The pumps will eventually need servicing and replacing; the insulation of the piping may need resealing and tanks on the roof will need to be topped up occasionally with a coolant-like liquid to protect the internal wall of the pipes so the copper doesn't break down."

Doncon is a strong believer in looking after our natural resources and that sustainable industries are the future. Coming from a farming family where he learnt to pay for every resource used, he believes individuals, businesses and companies need to give back.

"I am of the opinion that businesses need to change to be sustainable," he says. "Supreme Heating is that fit for me. The evacuated tubing system has been used overseas for about 40 years as the main system for hot water generation in places that have limited sun and so need the most efficient systems. In comparison Australia has all the sun and nowhere near the same efficiency of heating and cooling systems.

"WA is second in the world for having blue sky days yet we are not a leader in the solar market yet.

"Facts like these are what motivates me to share with and educate people about more sustainable ways to build."

When asked if the technology behind the product and the cost of producing the solar heating system was cost effective, Doncon replies with a resounding "definitely". He says that based on performance models, he expected the system would reduce the Bunbury centre's gas usage for pool heating by up to 70 per cent over 12 months.

"In the past three months, which were the wettest period of the year for the region, the system has saved the centre almost \$20,000," he says.

"Based on current gas prices, that is a six year return on investment for the centre, and we know gas and power are not going to get cheaper. This is a hot water system that is reducing the gas heater running costs.

"The gas heater at the sports centre is about as big as my van and is used to heat the pools, the air handling and the hot water for showers. A large component of that hot water demand is pool heating which means the centre's gas bill was significant," he says.

"The dependence on fossil fuels at centres like the Bunbury centre has surpassed wage costs. Imagine the difference a system like this could make in recreation centres around the country?"

"Plus there is an untapped market in the WA mining sector. The cost savings for a mining company to install a system like this, which reduces fossil fuel usage, would also benefit the company's sustainable image in the community."

Contacts: www.supremeheating.com.au



Supreme Heating WA agent Craig Doncon showing the evacuated tubing solar heating system to Mark Robson and Rob Horn

The solar system works if it's sunny, cloudy or even raining





The development reflects a relationship with the nearby beach.

A rewarding lifestyle

NHArchitecture has won the Sir Osborn McCutcheon Award for Commercial Architecture for the design of a lifestyle centre in a new Victorian coastal development.

The architects were lauded for designing a sophisticated and welcoming centre which includes three swimming pools.

Saltwater Coast is a new housing subdivision near Point Cook on Melbourne's fringe. It will accommodate around 4000 residents and appeal to the aspirational second home buyer.

The development thematically exploits its proximity to a beautiful stretch on the western shores of Port Phillip Bay. The land owners and their landscape architects have put a great deal of effort into the careful reinterpretation of a sensitive local ecology that boasts a very significant bird migration area at the Cheetham Wetlands.

A lifestyle centre is now *de rigueur* in new subdivisions, acting as both a community centre and private recreation club for the residents. The question for the architects was how to reconcile the march of suburban sprawl with such a sensitive environment.

Containing a lap pool, recreational pool, children's pool, spa, gymnasium, tennis courts, a café and multi-purpose function space, the lifestyle centre boasts all the facilities a healthy body would crave, and importantly encourages a sense of community and ownership among the locals, who will in the end manage the facility via a body corporate structure.

Because the new facility is located on a prominent corner, the architects aimed for monumentality – an architecture that is civic, in opposition to the “cacophony of individualism” that characterises the growing collection of houses.

The building is a monolithic, timber-clad sinuous form that is both open and containing of space. The façade is cut to create apertures for strategic viewing of



The design has been lauded for being sophisticated and welcoming



the adjacent parkland and the city lights on the horizon.

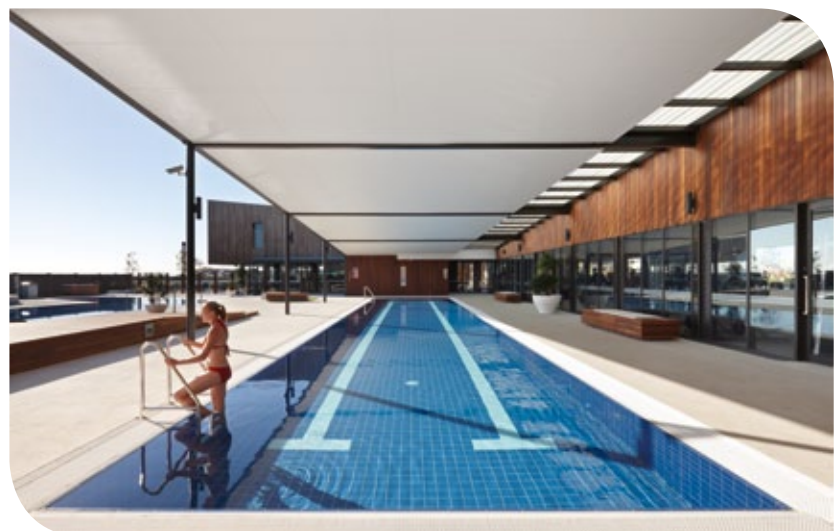
A restrained palette of timber, glass and dark bronze lends the building a deliberate gravitas.

NH Architecture has successfully provided the local community with a high quality, uniquely designed community centre, delivered within a robust commercial environment, and setting a benchmark for Point Cook and the surrounding area.

Contact: www.nharchitecture.net ■

LEFT: The timber clad design is monumental while relating to the environment

BELOW: The three pools are integral to the centre





Saltwater Coast Lifestyle Centre

Project Details

Address: Saltwater Coast Estate, Point Cook, Victoria

Date of completion: November 2011

Project cost: \$6.1 million

Gross floor area: 1410m²

Contract: Design & construct with consultant team novated to the builder

Photographer: Dianna Snape

NH Architecture Design Team

Project principal: Peter Dredge

Design principal: Hamish Lyon

Project director: Andy Gentry

Project architects: Fiona Collie, Emily Kilvington

Architects: Astrid Jenkin, Mitch McTaggart, Chris Reddaway, Silvia Tasani, Jan Vastestaeger

Architectural draftsman: Chad Harrison

Architectural illustrator & model maker: Ramiro Marroquin

Consultant Team

Builder: Masbuild

Developer/project manager: FKP Property Group

Structural & Civil: Cardno Ltd

Mechanical, electrical & hydraulic: Murchie Consulting

Building surveyor: McKenzie Group Consulting

Acoustic: Acoustic Logic Consultancy

Traffic: GTA Consultants

Cost consultant: Donald Cant Watts Corke

Pool Consultant: David Powick & Associates

Landscape: Tract

Heating with Confidence and Satisfaction

TETECOINVERTER DRIVE HEAT PUMPS

5 YEAR WARRANTY

As technology has improved over the years, the engineering of heat pumps has developed enormously and the new series of inverter drive heat pumps is no exception. What has not changed, though, is Toyesi's superior level of expertise in designing and manufacturing high quality products customised to suit your needs.

CUSTOM ENGINEERED EXCELLENCE

Toyési POOL HEATERS **02 9679 9400**
AGENTS IN NSW, VIC & QLD.
Toyési.com.au



Want to find Swimming Pool Building Contracts?

TendersOnline is the one stop shop for you to find all the tenders for swimming pool construction and maintenance that you need. Stop working on small jobs and get on board with tendering – its easier than you think with TendersOnline and is a far superior way of sourcing higher value contracts.

TendersOnline can help you:

- Get noticed in the marketplace with eportfolio
- Identify the right tenders for your business
- Plan and organise a steady stream of work

To get on onboard and find more swimming pool tenders today call Barry on 1800 674 120.

www.cordelltenders.com.au

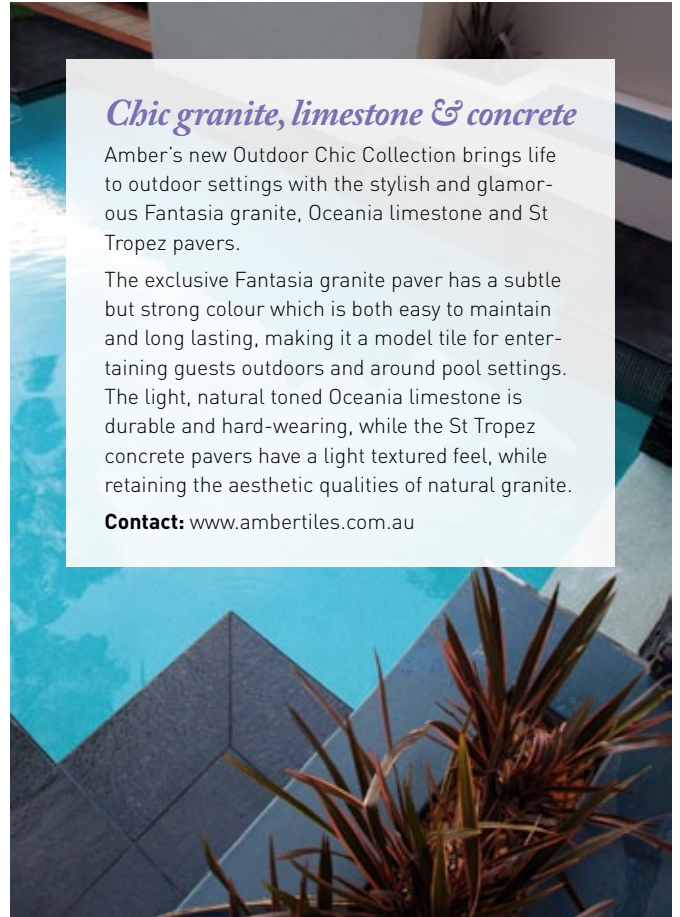


Waterslides for Waterplay

Waterplay Solutions Corp has added waterslides to their extensive suite of products including aquatic play and urban features, slide activity centres and water management solutions.

The nine RTM waterslides fall under the categories of body slides designed for one rider with both open and enclosed slide flumes and many twists and turns; speed slides designed with a steep drop for maximum adrenaline; extreme slides offering an exciting experience that ends with the rider twirling around a large bowl then dropping into the slide exit; and inner tube slides featuring a tube designed for 1 to 6 riders and featuring multiple loops, dips and turns in both open and enclosed varieties.

Contact: www.waterplay.com



Chic granite, limestone & concrete

Amber's new Outdoor Chic Collection brings life to outdoor settings with the stylish and glamorous Fantasia granite, Oceania limestone and St Tropez pavers.

The exclusive Fantasia granite paver has a subtle but strong colour which is both easy to maintain and long lasting, making it a model tile for entertaining guests outdoors and around pool settings. The light, natural toned Oceania limestone is durable and hard-wearing, while the St Tropez concrete pavers have a light textured feel, while retaining the aesthetic qualities of natural granite.

Contact: www.ambertiles.com.au



Natural beauty of naked gums

As the warmer months approach, thoughts of long afternoons spent alfresco will entice many homeowners to renovate their outdoor living space. Installing a natural eucalypt timber deck can add an attractive and practical backdrop for summer entertaining.

Boral Timber's Australian hardwood timber species are excellent for decking due to their density, colour spectrum, natural beauty and durability. The range includes Blackbutt, Forest Reds, Grey Ironbark, Spotted Gum, Stringybark, River Reds and Tallowood.

Contact: 1800 818 317 or www.boral.com.au/timber

Outdoor winner with Canasta

Patricia Urquiola approaches the outdoors starting with the theme of woven patterns – reviving and personalising the concept with a traditional look, but giving it a decisively contemporary appeal without becoming overburdened by the need for nostalgia. Vienna straw, with its decorative geometric shape, was her element of

inspiration. The Canasta collection is enriched by a series of tables and service elements with steel structures. Available at Space Furniture in Sydney, Melbourne and Brisbane.

Contact: www.spacefurniture.com.au



An outdoor lounge room

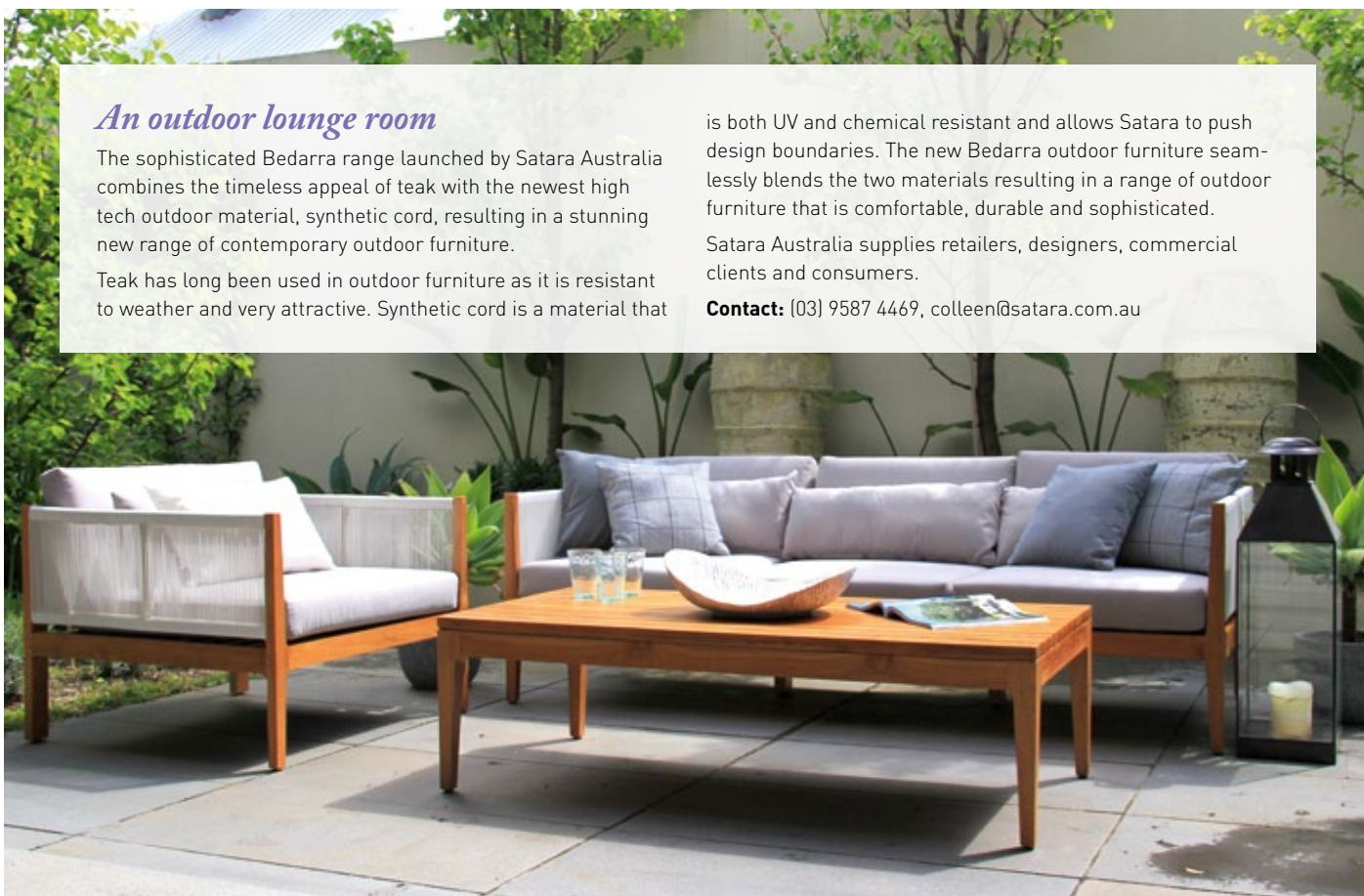
The sophisticated Bedarra range launched by Satara Australia combines the timeless appeal of teak with the newest high tech outdoor material, synthetic cord, resulting in a stunning new range of contemporary outdoor furniture.

Teak has long been used in outdoor furniture as it is resistant to weather and very attractive. Synthetic cord is a material that

is both UV and chemical resistant and allows Satara to push design boundaries. The new Bedarra outdoor furniture seamlessly blends the two materials resulting in a range of outdoor furniture that is comfortable, durable and sophisticated.

Satara Australia supplies retailers, designers, commercial clients and consumers.

Contact: (03) 9587 4469, colleen@satara.com.au





Showcasing your green credentials

Splash Monitoring is a unique online monitoring service for renewable energy systems and energy efficiency measures, developed by the team of building services engineers and IT specialists at Energy Conscious Design in New Zealand.

It is designed to show aquatic centre patrons exactly how the environmental features of the centre are saving energy and contributing to carbon reduction. It promotes renewable energy systems, educates patrons and helps optimise system performance. It has an easy plug-and-play setup and is cost effective.

Each Splash installation has its own dynamic animated web page, showing a schematic animation of the system with instantaneous data that is refreshed every 10 seconds. It also includes system information, data logging and prompts to optimise system performance.

Contact: www.splashmonitoring.com



Heavy duty heat pump

Waterco's new Electroheat Pro 96kW commercial grade heat pump can heat pools up to 250,000 litres with a maximum flow rate of 680lpm with a co-efficient of performance (COP) of 6.2.

Using R410A refrigerant, its dual high performance hermetic scroll compressors run at increased efficiency, with less noise and vibration than products using other refrigerant types. It also has six titanium heat exchangers, a powder-coated heavy gauge casing, an 80mm connection, an inbuilt flow switch, an ambient operating range of 60C to 400C and forklift access.

Contact: www.waterco.com.au

Shading is logical

Sun is great, but too much is a turn-off. Phase II of the Australian-designed outdoor Logic awnings range provides controlled shade, with a series of refinements to the original product with a key focus on improving the ease of installation and use. These include an improved bottom rail with the ability to include locking bolts, and a new fabric valance option.

The awnings have been made specifically for the Australian climate and are designed with flexibility in mind, with fabrics up to five metres and drops up to four metres available by incorporating a heavy duty 78mm steel roller tube.

Contact: www.hunterdouglas.com.au





Walk on water

SpaTrack is an underwater treadmill and spa pool in one, designed and manufactured in Australia by Koslex.

The treadmill goes up to 9kph, allowing the user to walk or jog in a low-impact environment. The human body is approximately 75 per cent lighter when submerged waist deep, taking the load off ligaments, joints and back while still maintaining aerobic fitness and building strength. Muscle strength is developed through water resistance – the faster you move through the water, the greater the resistance. The warm water also enables greater flexibility and reduces risk of strains.

Contact: (03) 9999 7978, www.physiopools.com



Eco 800 passes the test

Pentair's new Eco 800 pool pump combines sophisticated hydraulic design with the latest advances in permanent magnet variable speed electric motors. Assembled in Australia using a combination of local and imported components, it has undergone a rigorous test bed program to show that it will operate to optimum efficiency and reliability under all conceivable Australian conditions.

Aquatic Products product manager Robert Sterland says the Eco 800 provides three programmable speeds allowing the selection of the most efficient setting for filtration, cleaning and water features.

Its axial flux, brushless permanent magnet motor delivers high efficiency and low noise levels, and is fault-protected against damage using a shut down feature in the event of a locked pump rotor, under or over-voltage faults or over-current and will automatically reduce the speed if an over-temperature situation occurs.

Contact: Freecall 1300 137 344, au.sales@pentair.com.au

GLASS PEARLS

Superior filter media



Manufactured from pure glass, Glass Pearls are a new generation of filter media, capable of providing water of superior clarity.

Its spherical shape results in low coefficient of friction, reducing backwash requirements, saving pool owners both time and water.

- 3 micron filtration
- 20% less backwash water
- High purity
- Safe and smooth
- Time saving
- 0.6mm to 0.8mm in size



WATERCO
water, the liquid of life

www.waterco.com



Improving pool hall circulation

Thermal stratification (hot air rising and cool air falling), causes indoor pool hall systems to constantly over-compensate. Thermal de-stratification in heated indoor pool halls can enable you to turn down the pool water thermostat by 2 to 3 degrees C, measurably reducing air heating and cooling costs, improving summer comfort levels and removing the condensation from the internal surfaces.

The US-designed Air Pear is a simple plug-and-play solution that can be easily installed into any indoor pool hall to provide significant energy savings and comfort improvements. They have been recently installed into the MLC Burwood indoor heated pool.

Contact: www.airius.com.au



Incentives for commercial customers

BioLab Australia is offering enticing incentives for its competitively priced ProGuard range of commercial pool care products including everything from algaecides to sanitisers, oxidisers, balancers and specialty products.

Two introductory offers are available: buyers who purchase \$2000 or more of pool care products will receive an underwater camera, first aid kit and extended trading terms; buyers who purchase \$4000 or more of pool care products receive an underwater camera, first aid kit, \$100 gift card and extended trading terms. The introductory offer is restricted to one order per client.

Contact: bioguard.com.au



Wibit goes flattop

Wibit has ventured into new waters with its the unique double-wall construction that creates an extremely low-profile and a virtually flat surface.

Wibit says its innovation in inflatable water sports products sets new standards but remains true to its principals of quality design and high safety. The new products were recently presented at the Interbad trade show in Stuttgart and the NRPA Parks and Recreation Show in Anaheim USA.

Wibit also has a redesigned website where it is easier to view new products, and to navigate as the products are now classified in the "commercial pools" and "open water" categories.

Contact: www.wibitsports.com, robert@hydrocarepools.com.au

Advanced

Pool Surface Protection

(now available in Australia from the United States)

Proven technologies from the water treatment industry provide superior results for faster pool startups, easier pool restoration and affordable pool surface care.



Proactive Rendering Treatment for Pool Startups

- Prevents most plaster dust formation and tedious brushing during pool rendering.
- Reduces mottling, surface greying and discoloration.
- Exposes aggregates more brilliantly.
- Sequesters metals to prevent staining.
- Add during initial pool filling.



Advanced Scale-Stain Control & Salt Cell Descaler

- Ultimate scale-stain controller.
- Prevents and removes buildup.
- Salt cell descaler.
- Removes waterline calcium buildup.
- Phosphate FREE formula.
- Long lasting, affordable surface protectant.
- Only 1 bottle (per year) per 40,000 litres.



Surface Calcium Scale and Stain Remover

- Removes calcium buildup on all surfaces, tile and equipment.
- Just pour directly into pool water with results in 2 to 4 weeks.
- No scrubbing, pool draining and refilling expense.
- Strong iron stain remover.
- Advanced, non-acidic formula.

web: www.easycarewater.com

email: dlaumeyer@easycarewater.com

EASYCARE
Since 1978

(P) 00111-559-299-7660 (USA)

New Zealand (Master Distributor) AUSTRAL POOL
P (09) 570 9570

Australia (Master Distributor) Quartzon / Riversands
P (07) 32876444 (QLD)

EasyCare Products, div. of McGrayel Co., Inc. 5361 S. Villa Ave., Fresno, California 93726 U.S.A.



Made in U.S.A.



Zodiac's easy summer range

Zodiac's summer range is colour-coded and divided into four key areas, making it easy to find the right product in store: Pure Balance creates a perfectly balanced and harmonious pool; Pure Protection will kill the nasty micro-organisms in the pool; Pure Perfection will make the pool sparkle thanks to the range of chemicals including algacides, clarifiers, stain removers and water enhancers; Pure Indulgence is designed with luxury and indulgence in mind, offering everything for a sparkling spa.

Contact: 1800 688 552, www.zodiac.com.au



Shining a light on pools

Zodiac's new Evo2 LED pool light is modern and stylish, and comes in a range of colours, including fixed colour white or blue and multi-colour. Energy-efficient, the light has a rated life of up to 50,000 hours and runs on an extra-low voltage system, ensuring safety at all times.

A wet-niche lighting system, it is designed for use in concrete, vinyl and fibreglass pools and spas and can be easily integrated during the construction phase with their detachable cable.

Contact: 1800 688 552, www.zodiac.com.au

Accurate pool shop water testing in just 60 seconds

LaMotte's breakthrough WaterLink Spin® will revolutionise how you do your pool shop water testing. No longer do you have to sacrifice accuracy for speed. The laboratory-grade photometer allows you to analyse a sample of pool water in just 60 seconds.

- Spend less time testing water and more time talking to customers.
- Print reports with results and recommendations using your chemicals.
- Do a more comprehensive analysis with 10 different parameters instead of the usual six.
- Three simple tests, no messy preparation means less operator error, with very little training required.

Contact us now for more information on (02) 9450 0466 or info@vendart.com.au for more information.

Distributed exclusively by
 Vendart Pty Ltd
 PO Box 451 Pymble NSW 2073
 Ph 02 9450 0466 Fax 02 9450 0755 www.vendart.com.au

Water Quality Testing

the children's hospital at Westmead

Protect Your Pool, Protect Your Kids

View our online video showing common pool fencing faults and how to spot them at www.kidshealth.chw.edu.au/projects/drowning-prevention/swimming-pool-fencing

KIP11 0205/0811/1/02/1



Zodiac launches trade website

Finding the newest Zodiac pool equipment has never been easier, thanks to the launch of Zodiac Australia's trade website. Designed specifically with retailers in mind, it features all major product launches for the 2012-2013 season.

With no login required, all pool retailers and dealers can access the easy-to-use resource, which provides a helpful product overview including videos. It also includes a launch event page, which shows Zodiac's upcoming events around Australia.

Contact: www.zodiacauction12.com.au



Indoor outdoor cooking hub

The Artista is an innovative, space-saving solution for homeowners wanting to maximise their undercover outdoor or indoor cooking and entertaining space while creating an inviting entertainment hub. It includes a barbecue grill, bar fridge and sink with a premium stone bench top that can be extended at right angles to create either a bar and/or dining area and discretely swung back to a compact bench when not in use to minimise its footprint.

The Artista is designed and manufactured in Australia by Fab Kitchens, who can also custom design and build one to suit individual tastes, styles and sizes.

Contact: Nohad at Fab Kitchens, (02) 9688 2777.

AUSTEST

Laboratories

TESTING & CERTIFICATION

- Energy Efficiency (MEPS) including swimming pool pumps
- Vibration and shock from 4Hz to 3KHz inc MIL-STD-81052
- Salt Spray/Corrosion inc ASTM B117 and AS/IEC/EN 60068.2.
- IP Testing for Dust & Water
- EMC including MIL-STD-461E/F (RS101)
- EMF/EMR Site Surveys to AS 2772.2
- Wireless Devices to AS/NZS 4268
- A-Tick testing of 3G/GSM devices
- Inverter Testing and Approval
- LED Lighting Testing and Approval

WEB: www.austest.com.au | **EMAIL:** austest@austest.com.au

harvest | approval
laboratories | specialists

MELBOURNE
53 Latitude Blvd
Thornhill VIC 3074, Aust
Tel: +61 (0)3 9464 4016
Fax: +61 (0)3 9464 0687

SYDNEY (Main Office)
Unit 2, 9 Packard Avenue,
Castle Hill NSW 2154, Aust
Tel: +61 (0)2 9650 9990
Fax: +61 (0)2 8850 3113

NEW ZEALAND
16A, 9 Laidlaw Way,
Botany Sth, Auckland 2016, NZ
Tel: +64 (0)9 272 2371
Fax: +64 (0)9 272 2972

ADELAIDE
Unit 3, 4 Aristotle Close,
Golden Grove SA 5125, Aust
Tel: +61 (0)8 8288 7400
Fax: +61 (0)8 8288 7411

UNITED STATES
29416 Pebble Beach Drive,
Murrieta, CA 92563, USA
Tel: +1 323 371 8971
Fax: +1 323 372 3734



Award winning Hybrid

IQ supplies the complete range of Maytronics commercial and residential cleaners, including the Hybrid, which recently won the Innovation Award at the Piscine international trade show in France.

The Hybrid uses hydro-electric power from traditional suction lines to convert to low voltage electric inside the cleaner and drive a circuit board, solenoids and various sensors. Contact IQ now to find out more or to organise a free demo of the cleaner.

Contact: sales@interquad.com.au, www.interquad.com.au



Maxi-Shock

International Quadratics has released a 500 gram pack of calcium hypochlorite under the brand name Maxi-Shock. It's granular chlorine for the control of algae and bacteria in swimming pools. Using low residue, high strength calcium hypochlorite with minimum 70 per cent available chlorine, the pack is ideal as a retail sale for shock treatment.

Contact: sales@interquad.com.au, www.interquad.com.au



Pool and Spa heating
has never been
more affordable.

Put your trust with one of the
world's leading manufacturers
and design specialists.

RHEEM POOL HEATING

INSTALL A



Call us today for technical sales advice and the location of your nearest distributor, or visit www.rheempoolheating.com.au



Rheem Pool Heating Advisory 1300 132 950
email: info@rheempoolheating.com.au

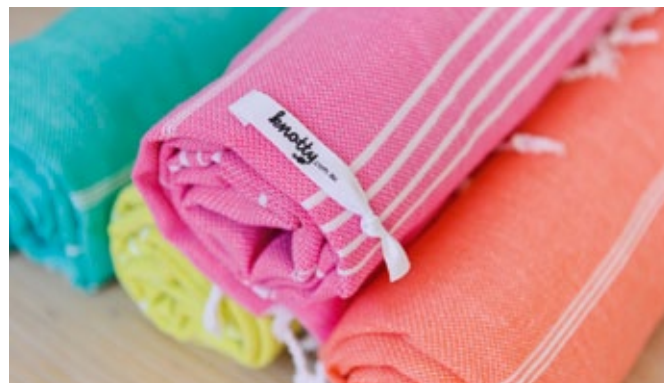


Tropical Strength Algaecide

International Quadratics' (IQ) latest addition to its Pool Solutions range is the Tropical Strength Algaecide. Formulated using a concentrated blend of organic copper complex and benzalkonium chloride, Tropical Strength algaecide is designed to combat the most resistant algae strains and is compatible with all recognised sanitisers.

IQ Tropical Strength Algaecide is available in 1litre and 20 litre containers.

Contact: sales@interquad.com.au, www.interquad.com.au



Knotty a bad idea

Block colours and super brights are the hottest trend for this summer, meaning Australian pools will be decked out in the newest Caribbean, Sherbie, Bubblegum and Splice from Knottys.

Made from 100 per cent natural cotton, these quality towels are hand-woven in Turkey in a range of stunning colours featuring distinctive knotted tassels, hence their name.

Used for centuries in the traditional Turkish bath houses, these beautiful towels are highly absorbent, quick drying and versatile; doubling as sarongs, wraps, scarves – even as a bag. Knottys are also light and compact as a result of the flat weave, making them ideal for beach bags and suitcases.

Contact: www.knotty.com.au

Maytronics introduces to the range Prizma Controller

So how does it work?

Blue I's Five Simple Steps:



- 1 water from the pool is dropped on the test strip
- 2 The photo-optic sensor tests the parameters, including pH and chlorine levels



- 3 Analysis is conducted and results appear on screen
- 4 An internal micro processor determines whether the injection of chemicals is required



- 5 Instructions are automatically transmitted to dosing device



Prizma Controller

- NO PROBES, no calibrations
- Accurate and reliable
- Chlorinator and liquid chlorine compatible

Watch the Video
Using QR app



Prizma



1300 MYDOLPHIN
www.maytronics.com.au



Lighting for fibreglass pools

Aqua-Quip has released its much anticipated EvoFG LED pool light targeted at the fibreglass and vinyl pool market. EvoFG flush mounted lights for fibreglass pools install into a 60mm hole and include a quick-connect cable assembly for easy installation.

The Australian-made EvoFG comes in fixed colours of white, blue or green or the multi-colour option which allows users to determine their choice of colour using the innovative Colour Palette Selection mode or feature modes like Colour Scroll where you scroll through the colour spectrum, or Seaside Colour Scroll where you scroll through ocean water colours.

Contact: www.aquaquip.com.au



Two new UV systems

Triogen new UVA Ray Crossflow and UVA Lite Crossflow medium pressure UV systems are designed for commercial pools and spas and have been developed over 18 months as a further addition to Triogen's UV range.

Covering flow rates from 40m³/h to 830m³/h, the CE approved system utilises a 316L stainless steel reactor, UV monitor, reactor temperature sensor and an automatic "smart drive" wiper system. The reactor also features quick release UV lamp connections making lamp replacement easy. The new systems offer high efficiency, plus low cost installation, operation and maintenance.

Contact: www.triogen.com







- Jets
- Heaters
- Touchpads
- Pumps
- Ozone
- Sensors
- Air controls
- Water features
- Cover lifters
- Manifolds

Your One Stop Spa Parts Site



The Spa & Hot Tub Specialists

Subscribe to our newsletter online

- Waterway plastics products
- Approved high flow suction
- Spa suction to 999 lpm
- Pool suction to 515 lpm
- E10 circulation pumps
- LED lighting systems
- Aromatherapy spa crystals
- Quality spa filter cartridges
- Titanium heater elements
- Spa accessories







www.spaparts.com.au
1300 736 025
sales@spaparts.com.au

Designer mulch

Earthcore's new Designer Mulch is ideal for revamping plant beds while adding a touch of colour and making the garden healthier.

Available in black, red and natural, Designer Mulch can be used to create a range of looks. The red mulch can be used to complement brickwork while enhancing vibrant greens in the garden; whereas the black can provide a contrast against white stone, creating a chic Japanese appeal.

Designer Mulch is 100 per cent Australian made and owned. Created from recycled wood, it is slow to break down, ensuring a high quality, long lasting mulch. It is contaminant free and fully bio-degradable.

Contact: www.plantsplus.com.au



SIDER-CRETE, INC.

'Worldwide Construction Technology Leader Since 1937'

ROLL-ON CEMENT REPLASTERS & DECK COATINGS

SIDER-PROOF FF-PR: Roll-On Cement Liquid Replaster

New and Improved Application Technique for Faster Application

An advanced technology in cement-based replastering coating for plaster swimming pools; also designed to waterproof water-falls, fountains & concrete ponds.



Just roll it ...then blade it smooth!

SIDER-DECK:

Render your concrete deck textured & beautiful with Sider-Deck! Cement-based and easy-to-apply over your new or existing concrete, existing pool deck coatings and concrete pebble/rock decking surfaces. Packaged as a kit, it is available in different pre-mixed colors!

We also offer a complete line of Concrete Repair and Decorative Coatings.

AQUAMAID
PTY LTD

Aquamaid Pty Ltd
290 Boundary Road
Braeside VIC 3195
Phone: 03 9580 9055
Fax: 03 9580 7156
Email: aquamaid@aquamaid.com.au

www.aquamaid.com.au

Tomorrows solutions today



Forget the problematic bells and whistles. Lets go back to the future with a **traditional Transformer Based Saltwater Chlorinator for a robust reliable system!**

- ✓ Distributors wanted
- ✓ 100% Australian made for Australian conditions
- ✓ Back to the future! Latest technology and easy to use
- ✓ 3 year full warranty

Contact our Sales team
p. 07 5565 0000
e. sales@evolutionwls.com.au
Unit 27/30 Mudgeeraba Road
Worongary Qld 4213



www.evolutionwls.com.au

Find all the Pool information that you need!

Cordell Information has been reporting on construction industry information for over 41 years. We can tell you **where new pools are being built right** now so you can contact people in your area and get your name in front of potential customers.

Cordell also has **historical pool information** as well so that you can directly target people in your industry.

Unlock the wealth of our information to:

- Optimise your exposure to the industry
- Maximise new leads
- Increase sales and grow profits
- Enhance your business
- Maintain a competitive edge

To find out how Cordell Information can be used to help you grow your business call us on **1800 80 60 60**.



FOR SALE

Take control of the Far Nth Queensland Market
2 Retail Pool Shops, 7 Service Vehicles and Trade Outlet
Each Store has high profile locations with easy access,
\$4M pa turnover and freehold title on main retail store.
Supported by a dedicated team of staff, you will be able
to hit the ground running.
Living in North Queensland will be everything you expect
it to be. Sun, sand, magnificent climate, coastal beauty
and a friendly community.

CONTACT
Graham Jackley for further details
Ph: 0432 656 207

new products



Take from the bottom, return to the top

The new EnviraFlo system from Cooke Industries increases the efficiency and cleanliness of pool systems.

Traditional circulation involves taking water from the top of the pool through the suction skimmer and returning it to the top via eye-balls. Not only doesn't this evenly circulate the water, it hampers proper filtration.

The EnviraFlo system draws water through the AntiVortex single channel drain at the lowest part of the pool (traditionally the hardest place to remove the water). The water then passes through the Leafvac debris canister on its way to the pump. Once filtered, the water returns via a traditional eyeball return line and a small amount of return water is directed to the Ecoskim venturi skimmer, skimming the top of the pool. The unique silk sock provides an extra filtration component.

Contact: 1300 652 076, www.cookeindustries.com.au



Cool surface solution

PolySoft Aqua is a flexible seamless surface solution, ideal for various wet areas including waterparks, pool surrounds, rehabilitation hydrotherapy pool entries and aquatic play areas.

The surface temperature of PolySoft can be up to 20°C cooler than traditional finishes such as concrete, asphalt and rubber. It is anti-slip, hygienic, easy to maintain, easily repaired if vandalised and coupled with colourfast technology, protects against premature fading. It is resistant to UV radiation and chemicals such as chlorine.

PolySoft is customisable; allowing the integration of patterns and logos into the surface design, and can be pre-blended to reduce installation time.

Contact: info@polysoft.com.au, <http://polysoftsurfaces.com>



Blue-I commercial controller re-launched

Maytronics has re-launched the Blue-I HG302 commercial pool controller in Australia. The HG302 is suitable for all commercial pools from small volume, high bather load swim school pools up to Olympic pools. It was used in the 2008 Beijing Olympics and is still used at Euro Disney Theme Parks and SunCity Resort in South Africa.

The benefits include:

- Large range of control parameters: Free Chlorine, pH, ORP (Redox), Temperature as standard; with Flow, Conductivity, Total Chlorine and Turbidity optional.
- Exceptional accuracy using high accuracy colorimetric sensing technology.
- Cost effective – both initial capital outlay and ongoing reduction in pool running costs provides payback quickly.
- Easy-to-use operation and adjustment of control parameters.
- Remote data analysis – potential to upgrade to remote monitoring capability.
- Compatible with secondary sanitation systems such as ozone.

Contact: www.maytronics.com.au.



iPad pool apps

Future Pools has designed two iPad apps for swimming pools.

The Swimming Pool Design app was created to help prospective pool owners take photos of their backyard and select a pool from the range of templates to place in the picture. Future Pools say they created it because many people have trouble visualising where a pool should go, what it may look like and what style and shape they would prefer.

The second app is Swimming Pool Water – Volume and Chemical Calculator. It was designed to quickly work out pool water volume and chemical levels required for backyard pools.

Contact: (08) 9493 0083, info@futurepools.com.au.

FOR SALE IN BALI

SWIMMING POOL BUSINESS

This privately owned, western managed business has been operating from Bali for 25 years and is the largest business of its kind in Indonesia. There are six branches in Bali and Lombok.

THE BUSINESS OPERATIONS INCLUDE:

- Pool construction and renovation
- Equipment sales, installation and service
- Chemical sales and pool maintenance

This is a unique opportunity to own and operate a profitable business and also enjoy a quality lifestyle in Bali.

For confidential inquiries (no brokers please), please email: poolinquiry@yahoo.com



FLOOD ALERT

Early warning of potential flooding events indoors or outdoors



\$19.95
RRP

Ever left a tap running & overfilled your Pool, Spa, Bath or Sink?

Ever had a leak or surface water enter your Home, Boat, Pool Plant Room?

You need  FLOOD ALERT

- ▶ Sounds alarm when water reaches the desired level or if surface water detected.
- ▶ When filling baths, tubs, pools, spas etc, simply use the cord supplied to suspend the unit with its base at the desired warning level.
- ▶ Unit can also be installed at floor level using the mounting bracket supplied to detect encroaching surface water.
- ▶ Water Resistant Housing.
- ▶ Uses 1 x replaceable A23 Dry Cell Battery (Battery NOT included).

DISTRIBUTED BY

P +61 7 5453 4775 F +61 7 5453 4776
E sales@csnglobal.com.au www.csnglobal.com.au



CSN Global Pty Ltd

Subscribe to SPLASH!

Tax invoice

Please find enclosed my cheque/money order for \$ _____ payable to **The Intermedia Group Pty. Ltd.** OR please charge my:

Mastercard Visa Amex

Cardholder Name: _____
 Expiry Date: ___ / ___ Signature: _____
 Name: _____
 Job Title: _____
 Company: _____
 Address: _____
 Suburb/Town: _____ Postcode: _____
 Ph: _____ Fax: _____
 Email: _____

The Intermedia Group Pty Ltd ABN 94002583682 PO Box 55 Glebe NSW 2037. Fax back your subscription to: (+61) 2 8580 6312 www.intermedia.com.au or call 1800 651 422

Yes! I wish to receive SPLASH! magazine

Within Australia *

\$AUD60.00 – 1 year, 6 issues
 \$AUD96.00 – 2 years, 12 issues – Save 20%
 \$AUD126.00 – 3 years, 18 issues – Save 30%
 * Prices quoted include GST

Overseas Rates

New Zealand

\$AUD62.00 – 1 year, 6 issues

Asia Pacific

\$AUD75.00 – 1 year, 6 issues


All Other Countries

\$AUD85.00 – 1 year, 6 issues

We are committed to handling your personal information in accordance with the privacy act.

Please Select one of the following:

Yes No - Please send me information about special offers and or events from SPLASH!



Advertisements

Abgal Liners & Covers.....	38
Albatross Pools	31
Allans Trade Warehouse	88
Aqua Action Slides.....	36
Aquamaid	87
Austest	83
Australian Spa Parts	86
Automatic Pool Cleaners (Aqua-Quip)	49
Bellson Electric	42
Classic Pools	36
Cooke Industries	27, 35
Cordell	75, 88
CSN Global.....	89
CV Tropical Pool & Spa	89
Davey Water Products	15
Easy Care Products	81
Emaux Water Technology	47
Enviroswim Australia.....	39
Evolution Water & Lighting Solution	87
Evolve	32
Focus Products	address sheet
Hayward Pool Products.....	IFC, 57
Hot Water Heat Pumps	46
Hydrocare Pools.....	59, 64
International Quadratics	71
Lincoln Pool Equipment	25
Maytronics Australia	44, 65, 85
NSPF.....	63
Pentair Water Australia.....	OBC, 4, 17
Pool Controls	8
Pool Ranger	41
Pool-Water Products	IBC
Remco Australia.....	19
Rheem Australia/Raypak.....	45, 84
Spa Electrics	50
Sunbather.....	6
Supreme Heating.....	48
Toyesi	75
Vendart	82
WaterBlade.....	37
Waterco.....	21, 79
Westmead Hospital	82
Zeolite Australia.....	59
Zodiac Group Australia	28



AUSTRALIA'S LEADING POOL BUILDERS CHOOSE

PARAMOUNT IN-FLOOR CLEANING SYSTEMS



Image courtesy of Coastal Pools & Spas



Paramount In-Floor Cleaning Systems offer you and your customers the perfect cleaning solution when working together to create the perfect outdoor oasis. Astonish your clients with the incredible effectiveness of an in-floor cleaning and circulation system.

Create a vanishing edge, add bar stools, benches, swim-outs and spas to your favourite pool design. Our systems will clean any pool you design every day.

Pool-Water Products | P: 03 9873 5055
F: 03 9873 4746 | Email: info@poolwaterproducts.com.au
Web: www.poolwaterproducts.com.au



Control Freaks

Pool owners are 3 times more interested in consumer electronics than average Australians

Our 3 levels of advanced automated pool control technology create all the excitement you need to close the sale. They provide just the right level of control for any pool owner. And the capability and convenience delivered by our industry-leading interface options will astonish the most techno-savvy customer:

IntelliTouch® system – The industry's most intelligent control system. Allows owners to program and control from 5 to 40 functions for total backyard automation. Sophisticated user interface options include remote monitoring and control – right from their iPad™, iPhone®, or iPod touch®.

EasyTouch® system – Controls 4 to 8 functions for pools and pool/spa combinations with several remote options, including an indoor control panel, spa-side remotes, and a wireless controller:

SunTouch® system – Offers affordable, one-touch control to program and operate the filter pump, heater, and up to two additional features. Program up to 4 schedules per function (6 schedules per system).

Demonstrate the power of Pentair automation to your customers. **Use your iPad™, iPhone®, or iPod touch® to try the latest ScreenLogic® interface technology.** Just download our App from the Apple® App StoreSM, System Name: Pentair: 00-00-00, Password: guest.



PENTAIR

Freecall: 1 800 664 266
www.pentairwater.com.au

®Apple®, iPad™, iPhone®, and iPod touch® are trademarks and App StoreSM is a service mark of Apple Inc.

We're talking pools at poolfyi.com